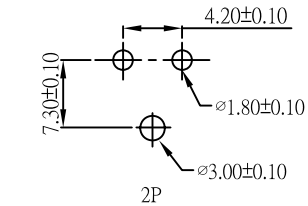


# WAFER(90°)

Part No:KJ-4260WR(B)-1  
 Material:pin:Brass Tin-Plated  
 Base:Nylon66 UL94-V2  
 Circuits:2-6circuits available  
 Insulation Resistance:1000MΩ min  
 Withstand Voltage:1500V AC/minute  
 Current Rating:9A AC/DC  
 Voltage Rating:600V AC/DC



P.C.B. LAYOUT

## ORDERING INFORMATION:

KJ-4260WR(B)-1 \* P - \* - \* (\*)

Part No

1 : Single Row

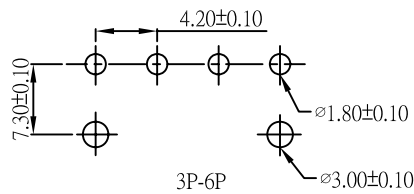
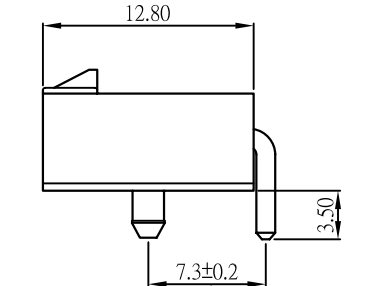
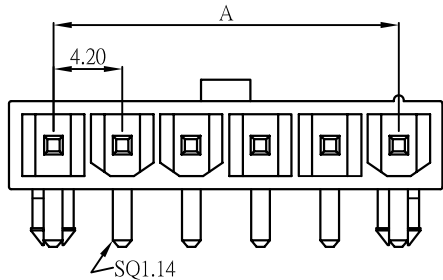
Circuit No

Special Material:PA46  
6T  
V-0

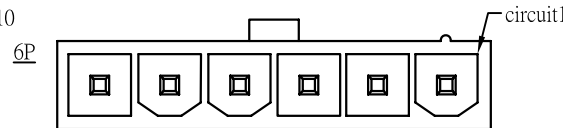
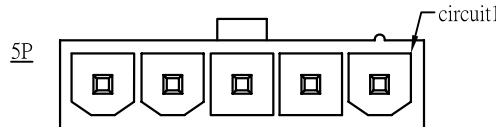
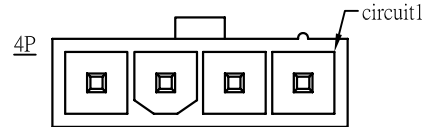
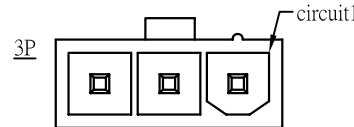
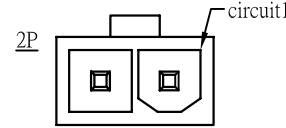
Color

:Tin plated  
M:Matte-tin plated  
G:Gold flash  
G1:Gold 1u"

RoHS



P.C.B. LAYOUT



### Dimensions

circuit	A	B
1*2	4.20	9.60
1*3	8.40	13.80
1*4	12.60	18.00
1*5	16.80	22.20
1*6	21.00	26.40

**KJ** 東莞嘉英電子廠

JIA YING ELECTRONICS

UNIT:MM

繪圖  
DRAWING:

黃玲麗

比例 (SCALE):

2.5:1

DESCRIPTION:

MX4.2 MINI-FIT(實心PIN)

ANGLE  
±2°

DIM:  
.X±0.30  
.XX±0.20  
.XXX±0.10

審核  
CHECKED BY

凌輝

名稱 (TITLE):

MX4.2實心PIN

PART NO:

KJ-4260WR(B)-1

REV:A2

核准  
APPROVAL BY

苗德蕙

存檔名稱 (FILE):

KJ-4260WR(B)-1

日期 (DATE):

2009/12/22

