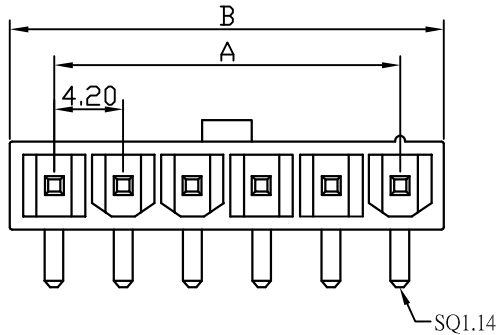
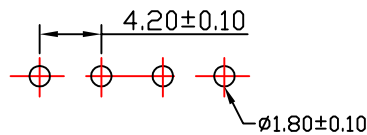
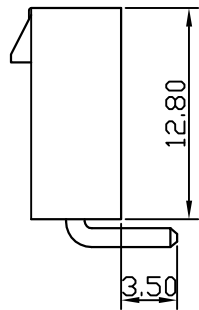
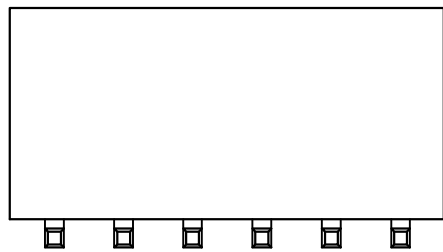


WAFER(90°)

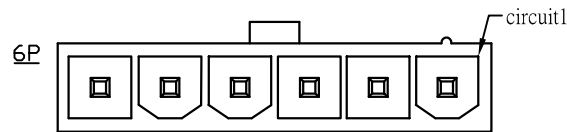
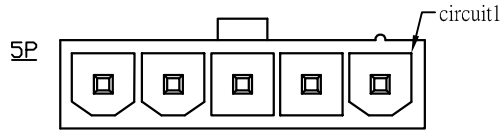
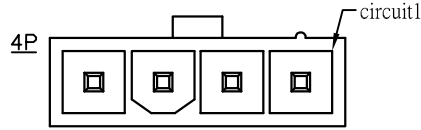
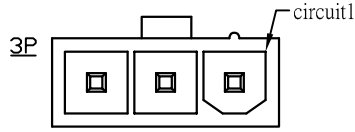
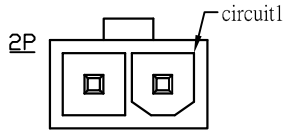
Part No: KJ-4260WR(A)-1
 Material: pin: Brass tin-plated
 Base: Nylon66 UL 94V-2
 Circuits: 2-6circuits available
 Insulation resistance: 1000MΩ min
 Withstand Voltage: 1500V AC/minute
 Current Rating: 9A AC/DC
 Voltage Rating: 600V AC/DC



SQ1.14



P.C.B. LAYOUT



RoHS

ORDERING INFORMATION:

KJ-4260WR(A)-1**P-**-*(*)

Part No
 1 : Single Row
 Circuit No
 Special Material:PA46
 6T
 V-0
 Color
 :Tin plated
 M:Matte-tin plated
 G:Gold flash
 G1:Gold 1u"

Dimensions

circuit	A	B
1*2	4.20	9.60
1*3	8.40	13.80
1*4	12.60	18.00
1*5	16.80	22.20
1*6	21.00	26.40

KJ 東莞嘉英電子廠
 JIA YING ELECTRONICS

UNIT:MM

繪圖
DRAWING:

吳華雄

比例 (SCALE):

2.5:1

DESCRIPTION:

MX4.2 MINI-FIT(實心PIN)

ANGLE
±2°

DIM:
.X±0.30
.XX±0.20
.XXX±0.10

審核
CHECKED BY

凌輝

名稱 (TITLE):

MX4.2實心PIN

存檔名稱 (FILE):

KJ-4260WR(A)

日期 (DATE):

2007/05/23

PART NO:

KJ-4260WR(A)-1

REV:A0

核准
APPROVAL BY

苗德蕙

PROJECTION:

