

WAFER(180°)

Part No:KJ-2003WV

Material:pin:Brass Tin-Plated

Base:Nylon66 UL94-V0

Circuits:2-15circuits available

Insulation Resistance:1000MΩ min

Withstand Voltage:800V AC/minute

Current Rating:3A AC/DC

Voltage Rating:100V AC/DC

ORDERING INFORMATION:

KJ-2003WV-*P-*

Part No

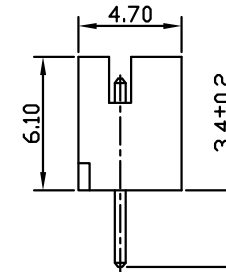
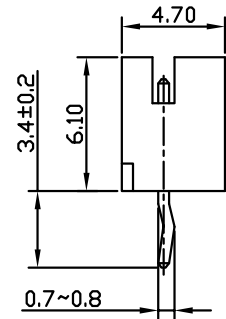
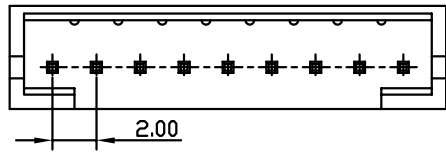
Circuit No

:Standard type W/Kink

RK:Reversed Kind

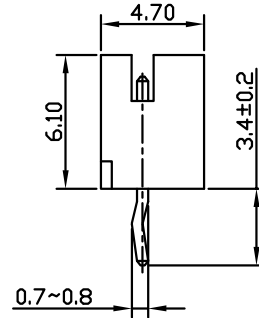
NK:None Kink

RoHS

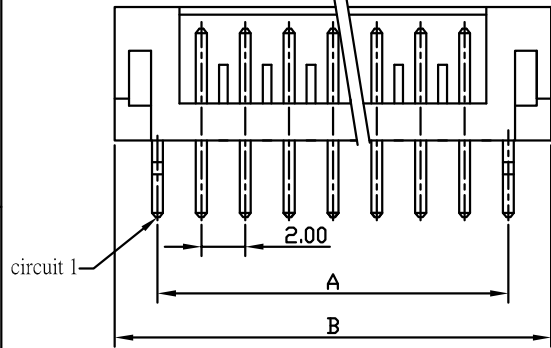


Reversed Kind

None Kink

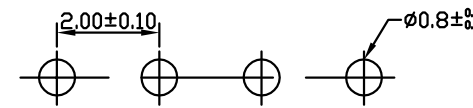


Standard type



Dimensions

circuit	A	B
2	2.00	6.00
3	4.00	8.00
4	6.00	10.00
5	8.00	12.00
6	10.00	14.00
7	12.00	16.00
8	14.00	18.00
9	16.00	20.00
10	18.00	22.00
11	20.00	24.00
12	22.00	26.00
13	24.00	28.00
14	26.00	30.00
15	28.00	32.00



P.C.B LAYOUT

KJ 東莞嘉英電子廠

JIA YING ELECTRONICS

UNIT:MM

繪圖
DRAWING:

王三星

比例 (SCALE):

3:1

DESCRIPTION:

JAE2.0 WAFER 180°

ANGLE
±2°

DIM:
.X±0.50
.XX±0.25
.XXX±0.10

審核
CHECKED BY

凌輝

名稱 (TITLE):

JAE2.00 180°

存檔名稱 (FILE):

KJ-2003WV

日期 (DATE):

2009/04/28

PART NO:

KJ-2003WV

REV:A0

核准
APPROVAL BY

苗德蕙

PROJECTION:

