

WAFER(90°)
 Part No: KJ-2001WR
 Material: pin: Brass tin-plated
 Base: Nylon 66 UL94V-0
 Circuits: 2-16circuits available
 Insulation resistance: 1000MΩ min
 Withstand Voltage: 800V AC/minute
 Current Rating: 3A AC/DC
 Voltage Rating: 100V AC/DC

ORDERING INFORMATION:

KJ-2001WR-*P-*-* (*)

Part No

Circuit No

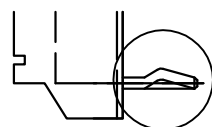
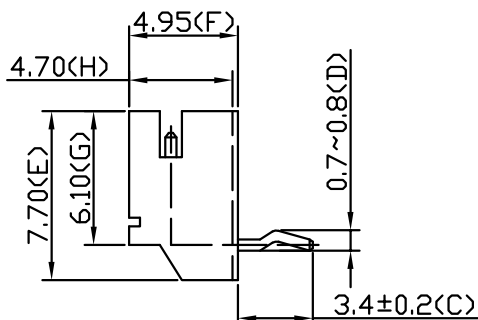
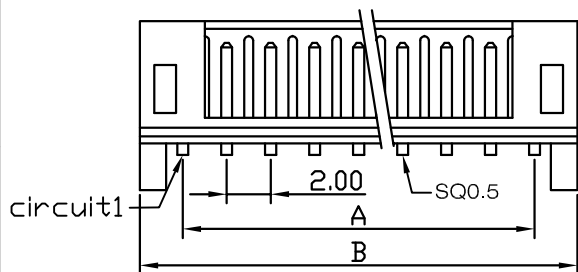
Special Material:PA46
6T

Color

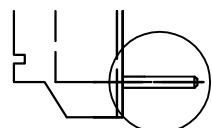
:Standard type W/Kink
NK:None Kink

:Tin plated
M:Matte-tin plated
G:Gold flash
G1:Gold 1u"

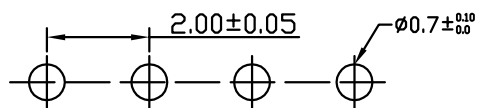
RoHS



Standard type



None kink



P.C.B LAYOUT

Dimensions

Circuit	A	B
2	2.00	6.00
3	4.00	8.00
4	6.00	10.00
5	8.00	12.00
6	10.00	14.00
7	12.00	16.00
8	14.00	18.00
9	16.00	20.00
10	18.00	22.00
11	20.00	24.00
12	22.00	26.00
13	24.00	28.00
14	26.00	30.00
15	28.00	32.00
16	30.00	34.00

KJ 東莞嘉英電子廠
JIA YING ELECTRONICS

UNIT:MM

繪圖
DRAWING:

吳華雄

比例 (SCALE):

7:1

DESCRIPTION:

PH2.0 WAFER 90°

ANGLE
±2°

DIM:
.X±0.50
.XX±0.25
.XXX±0.10

審核
CHECKED BY

凌輝

名稱 (TITLE):

PH2.00 90°

PART NO:

KJ-2001WR

REV:A0

核准
APPROVAL BY

苗德蕙

存檔名稱 (FILE):

KJ-2001WR

日期 (DATE):

2007/05/08

