

RoHS

WAFER(90°)

Part No: KJ-2503WR

Material: pin: Brass tin-plated

Base: Nylon 66 UL94V-2

Circuits: 2-18circuits available

Insulation resistance: 1000MΩ min

Withstand Voltage: 1000V AC/minute

Current Rating: 3A AC/DC

Voltage Rating: 250V AC/DC

ORDERING INFORMATION:

KJ-2503WR-*P-*-* (*)

Part No

Circuit No

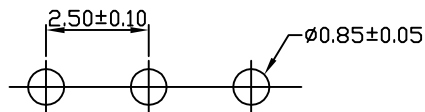
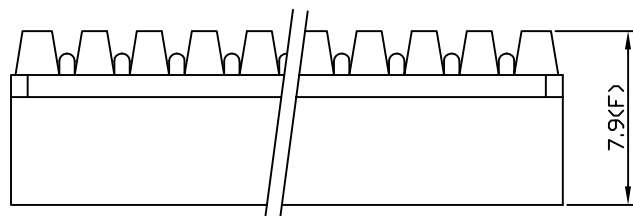
Special Material:PA46
6T
V-0

Color

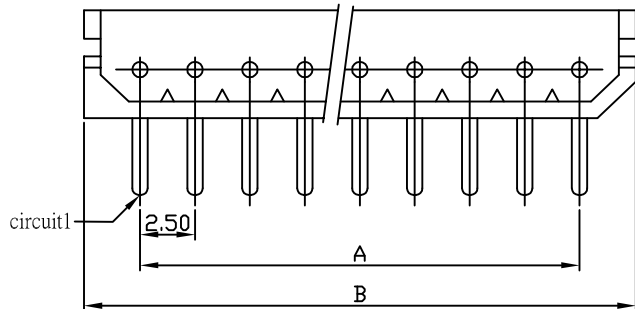
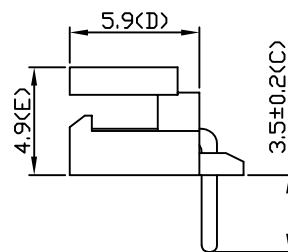
:Tin plated
M:Matte-tin plated
G:Gold flash
G1:Gold 1u"

Dimensions

circuit	A	B
2	2.50	7.50
3	5.00	10.00
4	7.50	12.50
5	10.00	15.00
6	12.50	17.50
7	15.00	20.00
8	17.50	22.50
9	20.00	25.00
10	22.50	27.50
11	25.00	30.00
12	27.50	32.50
13	30.00	35.00
14	32.50	37.50
15	35.00	40.00
16	37.50	42.50
17	40.00	45.00
18	42.50	47.50



P.C.B LAYOUT



KJ 東莞嘉英電子廠
JIA YING ELECTRONICS

UNIT:MM

繪圖
DRAWING:

吳華雄

比例 (SCALE):

3:1

DESCRIPTION:

MX2.5WAFER 90°圓PIN

ANGLE
±2°

DIM:
.X±0.50
.XX±0.25
.XXX±0.10

審核
CHECKED BY

凌輝

名稱 (TITLE):

2.5圓PIN 90°

存檔名稱 (FILE):

KJ-2503WR

PART NO:

KJ-2503WR

REV:A1

核准
APPROVAL BY

苗德蕙

PROJECTION:

