

RoHS

WAFER(180°)

Part No: KJ-3960WV

Material: pin: Brass tin-plated

Base: Nylon 66 UL94V-2

Circuits: 2-20circuits available

Insulation resistance: 1000MΩ min

Withstand Voltage: 1500V AC/minute

Current Rating: 7A AC/DC

Voltage Rating: 250V AC/DC

ORDERING INFORMATION:

KJ-3960WV-*P-* * (*)

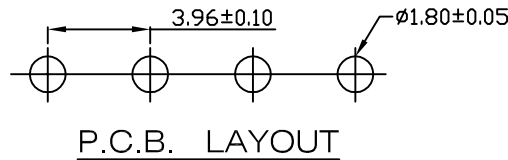
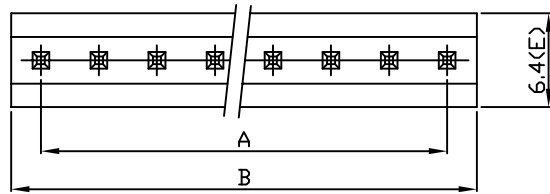
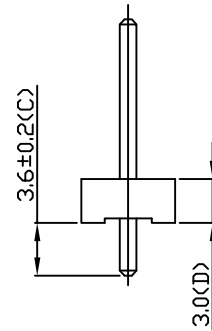
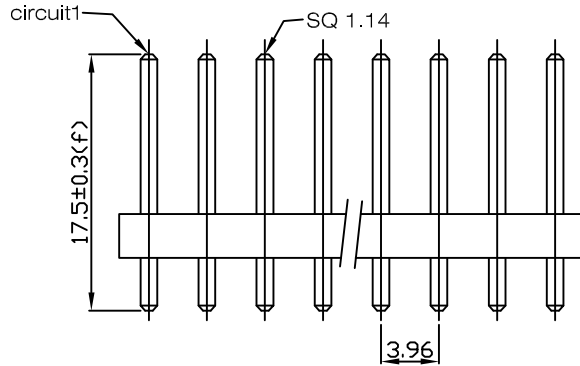
Part No

Circuit No (pin位)

Special Material:V-0

Color

:Tin plated
M:Matte-tin plated
G:Gold flash
G1:Gold 1u"



Dimensions

circuit	A	B	circuit	A	B
		3.96	11	39.60	43.56
2	3.96	7.92	12	43.56	47.52
3	7.92	11.88	13	47.52	51.48
4	11.88	15.84	14	51.48	55.44
5	15.84	19.80	15	55.44	59.40
6	19.80	23.76	16	59.40	63.36
7	23.76	27.72	17	63.36	67.32
8	27.72	31.68	18	67.32	71.28
9	31.68	35.64	19	71.28	75.24
10	35.64	39.60	20	75.24	79.20

KJ 東莞嘉英電子廠

JIA YING ELECTRONICS

UNIT:MM

繪圖
DRAWING:

王三星

比例 (SCALE):

2:1

DESCRIPTION:

MX3.96 WAFER 180° 無靠背

ANGLE
±2°

DIM:
.X±0.50
.XX±0.25
.XXX±0.10

審核
CHECKED BY

凌輝

名稱 (TITLE):

MX3.96WV無靠背

PART NO:

KJ-3960WV

REV:A2

核准
APPROVAL BY

苗德蕙

存檔名稱 (FILE):

KJ-3960WV

日期 (DATE):

2007/10/06

PROJECTION:

