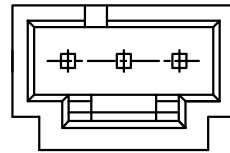
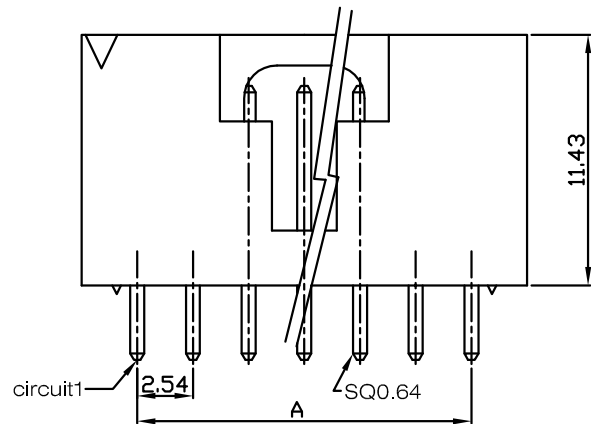
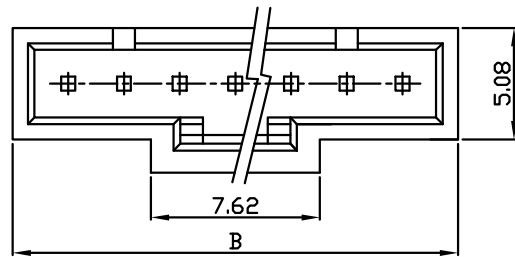
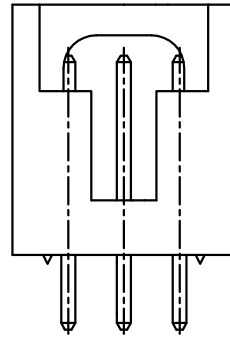


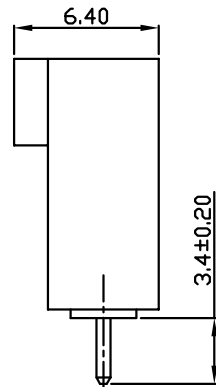
WAFER(180°)  
 Part No: KJ-2543WV  
 Material: pin: Brass Gold Flash  
 Base:PBT UL94-V0  
 Circuits:2-15circuits available  
 Insulation Resistance:1000MΩ min  
 Withstand Voltage:1000V AC/minute  
 Current Rating:3A AC/DC  
 Voltage Rating:250V AC/DC



3P



3P



ORDERING INFORMATION:

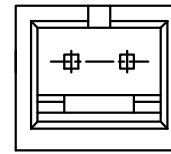
KJ-2543WV-\*P-\*(\*)

Part No

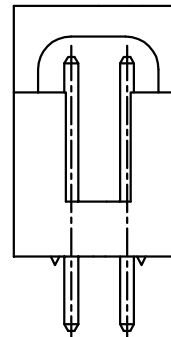
Circuit No

Special Material:PA46  
6T

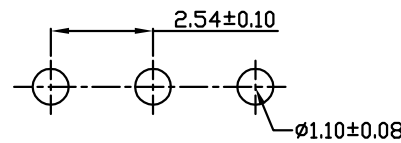
:Gold flash  
N: Tin plated  
M: Matte-tin plated  
G1: Gold 1u"



2P



2P



P.C.B LAYOUT

RoHS

Dimensions

circuit	A	B
2	2.54	7.62
3	5.08	10.16
4	7.62	12.70
5	10.16	15.24
6	12.70	17.78
7	15.24	20.32
8	17.78	22.86
9	20.32	25.40
10	22.86	27.94
11	25.40	30.48
12	27.94	33.02
13	30.48	35.56
14	33.02	38.10
15	35.56	40.64

**KJ** 東莞嘉英電子廠  
JIA YING ELECTRONICS

UNIT:MM

繪圖  
DRAWING:

王三星

比例 (SCALE):

3:1

DESCRIPTION:

MX 2.54 CD-ROM WAFER 180°

ANGLE  
±2°

DIM:  
.X±0.50  
.XX±0.25  
.XXX±0.10

審核  
CHECKED BY

凌輝

名稱 (TITLE):

MX 2.54 CD-ROM

PART NO:

KJ-2543WV

REV:A4

核准  
APPROVAL BY

苗德蕙

PROJECTION:

